

3rd International Conference Advanced Mechanics: Structure, Materials, Tribology

Assessment of Pile Vibrations in Various Soil Layers

AIPCP25-CF-AMSMT2025-00066 | Article

PDF auto-generated using **ReView**



Assessment of Pile Vibrations in Various Soil Layers

Dilshod Kholikov^{1, a)}, Dilfuza Ismatova^{2, b)}, Elbek Ismoilov^{3, c)},
Kamola Khaydarova^{3, d)}

¹Zarmed University Samarkand compus, Samarkand, Uzbekistan

²Samarkand State University of Architecture and Construction, Samarkand, Uzbekistan

³Samarkand State University, 140104, University blv. 15, Samarkand city, Uzbekistan

^{a)} dilshodxoliqov2587gmail.com

^{b)} ismatovadilfuza12@gmail.com

^{c)} eismoilov.samsu@gmail.com

^{d)} Corresponding author: xaydarovakamolaxakimovna@gmail.com

Abstract. The calculation of pile foundations should be carried out using mathematical models that describe their mechanical behavior. The design scheme can be represented both in analytical and numerical forms. When determining the bearing capacity and settlement of single piles, preference should be given to tabulated or analytical solutions provided in construction standards and regulations. All calculations of piles, pile foundations, and their bases should be performed using the design values of material and soil properties. This paper presents the results of an assessment of the influence of the excitation frequency of the pile foundation base on the amplitudes of transverse vibrations of a pile interacting with a two-layer soil according to the Winkler model.

INTRODUCTION

According to the provisions of SNIP II-7-81 “Construction in Seismic Regions”, the design model of the “pile–soil medium” system [1] must be selected taking into account the most significant factors that determine the stress state and deformations of the foundation and structural elements of the building (the structural scheme of the building, construction features, the nature of soil layers, the properties of foundation soils, and the possibility of their changes during construction and operation, etc.).

When designing pile foundations, the following factors should be taken into account: soil conditions of the construction site, hydrogeological regime, features of pile installation, and the presence of slurry beneath the pile tips. The design values of soil properties should be determined in accordance with **GOST 20522**, and the design values of the subgrade reaction coefficients of the soil surrounding the pile - in accordance with **Appendix [1]**.

Studies [2-5] present analyses and results of investigations on pile foundations interacting with various types of collapsible soils. The main requirements for pile foundation structures are outlined in manuals [6-8]. The methodology for calculating pile foundations under the influence of seismic waves and kinematic excitations is described in works [9].

In this paper, the vibration process of a pile foundation interacting with the base according to the **Winkler model**, where the base undergoes kinematic excitation, is considered.

PROBLEM STATEMENT

Let us set the origin of coordinates at the lower cross-section of the beam and direct the Ox axis vertically upward. Let $W_1(x, t)$ and $W_2(x, t)$ denote the deflections of the beam in each zone (Figure 1), which satisfy the following equations

$$EJ \frac{\partial^4 w_1}{\partial x^4} + m \frac{\partial^2 w_1}{\partial t^2} + k_1 W_1 = 0 \text{ for } 0 < x < l \quad (1)$$

$$EJ \frac{\partial^4 W_2}{\partial x^4} + m \frac{\partial^2 W_2}{\partial t^2} + k_2 W_2 = 0 \text{ for } l < x < L \quad (2)$$

The functions $W_1(x, t)$ and $W_2(x, t)$ satisfy the following boundary conditions

$$\frac{\partial W_1}{\partial x} = 0, \quad EJ \frac{\partial^3 W_1}{\partial x^3} = k_0(W_1 - W_0) \text{ at } x = 0 \quad (3)$$

$$\frac{\partial^2 W_1}{\partial x^2} = 0, \quad EJ \frac{\partial^3 W_1}{\partial x^3} = M \frac{\partial^2 W_1}{\partial t^2} \text{ at } x = L \quad (4)$$

under compatibility conditions

$$\begin{cases} W_1 = W_2, \quad \frac{\partial W_1}{\partial x} = \frac{\partial W_2}{\partial x}, \\ \frac{\partial^2 W_1}{\partial x^2} = \frac{\partial^2 W_2}{\partial x^2}, \quad \frac{\partial^3 W_1}{\partial x^3} = \frac{\partial^3 W_2}{\partial x^3} \end{cases} \text{ at } x = l \quad (5)$$

where k_0 is the stiffness coefficient of the contact during shear at the lower cross-section of the beam with the base, which moves according to the law $W_0 = W_0(t)$, M is the mass of the attached body (pile cap) at the upper cross-section of the beam.

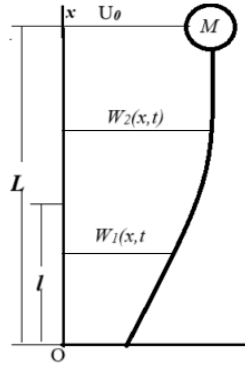


FIGURE 1. Scheme of the transverse bending of a beam carrying a concentrated mass M . Here, EJ is the flexural rigidity of the beam, m is the mass per unit length, k_1 and k_2 are the subgrade reaction coefficients for each zone of beam-soil contact, with corresponding lengths l and $L-l$, and L is the total length of the beam.

We assume $W_0(t) = U_0 \sin \omega t$ (U_0 - amplitude, ω - frequency) and represent the solutions of equations (1) and (2) in the form of

$$W_1 = U_1(x) \sin \omega t, \quad W_2 = U_2(x) \sin \omega t$$

where the functions $U_1(x)$ and $U_2(x)$ satisfy the equations

$$EJ U_1^{IV} + (k_1 - m\omega^2) U_1 = 0 \quad 0 < x < l \quad (6)$$

$$EJ U_2^{IV} + (k_2 - m\omega^2) U_2 = 0 \quad l < x < L \quad (7)$$

boundary

$$U_1'(0) = 0, \quad EJ U_1'''(0) = k_0[U_1(0) - U_0] \quad (8)$$

$$U_2''(L) = 0, \quad EJ U_2'''(L) = -M\omega^2 U_2(L) \quad (9)$$

matching conditions

$$U_1(l) = U_2(l), \quad U_1'(l) = U_2'(l), \quad U_1''(l) = U_2''(l), \quad U_1'''(l) = U_2'''(l) \quad (10)$$

METHOD OF SOLUTION

When performing the calculations, we assume that $k_1 \geq 4k_2$

1. We consider the case $\omega < \sqrt{k_2/m}$ (Case 1).

The general solution of equations (6) and (7) can be written as:

$$U_1 = C_1 Y_1(\beta_1 * (\xi - l_1)) + C_2 Y_2(\beta_1 * (\xi - l_1)) + C_3 Y_3(\beta_1 * (\xi - l_1)) + C_4 Y_4(\beta_1 * (\xi - l_1))$$

$$U_2 = C_1 S_1[\beta_2(\xi - l_1)] + C_2 \frac{\beta_1}{\beta_2} S_2[\beta_2(\xi - l_1)] + C_3 \frac{\beta_1^2}{\beta_2^2} S_3[\beta_2(\xi - l_1)] + C_4 \frac{\beta_1^3}{\beta_2^3} S_4[\beta_2(\xi - l_1)]$$

$$\text{where } w = \sqrt{\frac{m\omega^2 L^4}{EJ}}, \quad \beta_1 = \sqrt[4]{w_1^2 - w^2}, \quad \beta_2 = \sqrt[4]{w_2^2 - w^2}, \quad w_1 = \sqrt{\frac{k_1 L^4}{4EJ}}, \quad w_2 = \sqrt{\frac{k_2 L^4}{EJ}}, \quad l_1 = l/L.$$

$Y_i(\beta z)$, $S_i(\beta z)$ are Krylov functions [5], defined by the formulas:

$$\begin{aligned} Y_1 &= \cos \beta_1 z \operatorname{ch} \beta_1 z, & Y_2 &= (\sin \beta_1 z \operatorname{ch} \beta_1 z + \cos \beta_1 z \operatorname{sh} \beta_1 z), \\ Y_3 &= \sin \beta_1 z \operatorname{sh} \beta_1 z, & Y_4 &= (\sin \beta_1 z \operatorname{ch} \beta_1 z - \cos \beta_1 z \operatorname{sh} \beta_1 z), \\ S_1 &= \cos \beta_2 z \operatorname{ch} \beta_2 z, & S_2 &= (\sin \beta_2 z \operatorname{ch} \beta_2 z + \cos \beta_2 z \operatorname{sh} \beta_2 z), \\ S_3 &= \sin \beta_2 z \operatorname{sh} \beta_2 z, & S_4 &= (\sin \beta_2 z \operatorname{ch} \beta_2 z - \cos \beta_2 z \operatorname{sh} \beta_2 z). \end{aligned}$$

The constants C_1, C_2, C_3 and C_4 are determined from conditions (8)-(10), which yield:

$$\begin{aligned} C_1 &= \frac{-\beta_0^2 s_{12}}{d_0}, & C_2 &= \frac{\beta_0^2 s_{11}}{d_0}, \\ C_3 &= C_1 r_{11} + C_2 r_{12}, & C_4 &= C_1 r_{21} + C_2 r_{22}, \\ s_{21} &= a_{21} + r_{11} a_{23} + r_{21} a_{24}, & s_{22} &= a_{22} + r_{12} a_{23} + r_{22} a_{24}, \\ d_0 &= s_{11} s_{22} - s_{12} s_{21} & s_{11} &= a_{11} + r_{11} a_{13} + r_{21} a_{14}, & s_{12} &= a_{12} + r_{12} a_{13} + r_{22} a_{14}, \\ r_{11} &= \frac{b_{21} b_{14} - b_{11} b_{24}}{d}, & r_{12} &= \frac{b_{22} b_{14} - b_{12} b_{24}}{d}, & d_0 &= b_{13} b_{24} - b_{23} b_{14} \\ r_{21} &= \frac{b_{11} b_{23} - b_{21} b_{13}}{d}, & r_{22} &= \frac{b_{12} b_{23} - b_{22} b_{13}}{d}, \\ b_{21} &= \alpha w^2 S_1(1, w) + b_{01} S_3(1, w), & b_{22} &= \alpha w^2 S_2(1, w) \frac{\beta_1}{\beta_2} + b_{02} S_4(1, w), \\ b_{23} &= \alpha w^2 S_3(1, w) \frac{\beta_1^2}{\beta_2^2} + b_{03} S_2(1, w), & b_{24} &= \alpha w^2 S_4(1, w) \frac{\beta_1^3}{\beta_2^3} + b_{04} S_1(1, w), \\ b_{01} &= -2\beta_2^3, & b_{02} &= -4\beta_2^2 \beta_1, & b_{03} &= -2\beta_1^2 \beta_2, & b_{04} &= 4\beta_1^3, \\ b_{11} &= -\beta_2^3 S_3(1, w), & b_{12} &= -\beta_2^2 \beta_1 S_4(1, w), & b_{13} &= \beta_1^2 \beta_2 S_1(1, w), & b_{14} &= \beta_1^3 S_2(1, w), \\ a_{21} &= -2\beta_1^3 Y_2(0, w) + \beta_0^2 Y_1(0, w), & a_{22} &= -4\beta_1^3 Y_3(0, w) + \beta_0^2 Y_2(0, w), \\ a_{23} &= -2\beta_1^3 Y_4(0, w) + \beta_0^2 Y_3(0, w), & a_{24} &= 4\beta_1^3 Y_1(0, w) + \beta_0^2 Y_4(0, w) \\ a_{11} &= -\beta_1 Y_4(0, w), & a_{12} &= 2\beta_1 Y_1(0, w), & a_{13} &= \beta_1 Y_2(0, w), & a_{14} &= 2\beta_1 Y_3(0, w). \end{aligned}$$

RESULTS

The calculations were carried out for the following parameter values:

$$\begin{aligned} E &= 2 \cdot 10^{11} \text{ Pa}, & a &= 0.3 \text{ m}, & h &= 0.3 \text{ m}, & L &= 5 \text{ m}, & \rho_0 &= 45 \frac{\text{kg}}{\text{m}}, & M &= 3000 \text{ kg}, \\ k_1 &= 5 \cdot 10^6 \frac{\text{N}}{\text{m}^2}, & k_2 &= 10^6 \frac{\text{N}}{\text{m}^2}, & k_0 &= 5 \cdot 10^5 \frac{\text{N}}{\text{m}^2}. \end{aligned}$$

Figure 2 shows the curves of deflection and axial stress $\sigma = Eh \frac{d^2 U}{dx^2}$ distributions along the beam length $\xi = x/L$ for various values of the frequency ω .

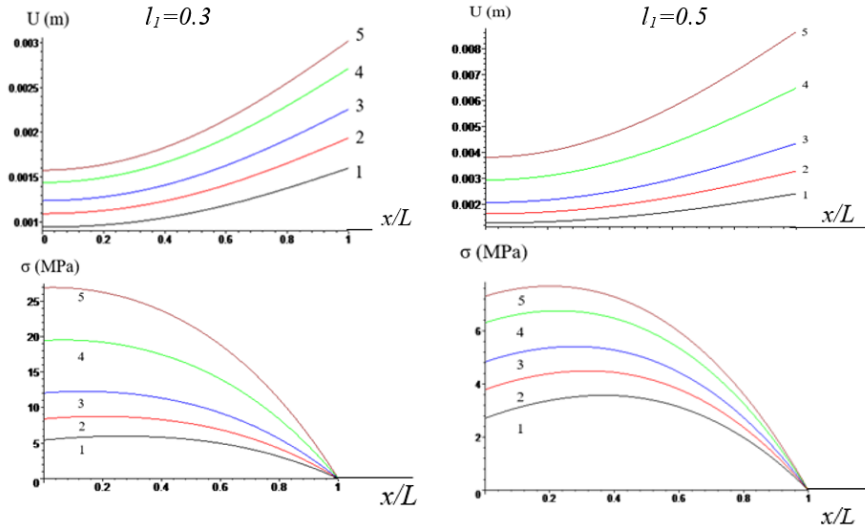


FIGURE 2. Curves of the distribution of the deflection amplitude $U(\text{m})$ and axial stress σ (MPa) along the beam length $\xi = x/L$ for two values of the ratio $l_1 = \frac{l}{L}$, at different values of the base vibration frequency $\omega(\text{sek}^{-1})$: 1- $\omega = 1.75$, 2- $\omega = 1.78$, 3- $\omega = 1.8$; 4- $\omega = 1.82$; 5- $\omega = 1.83$

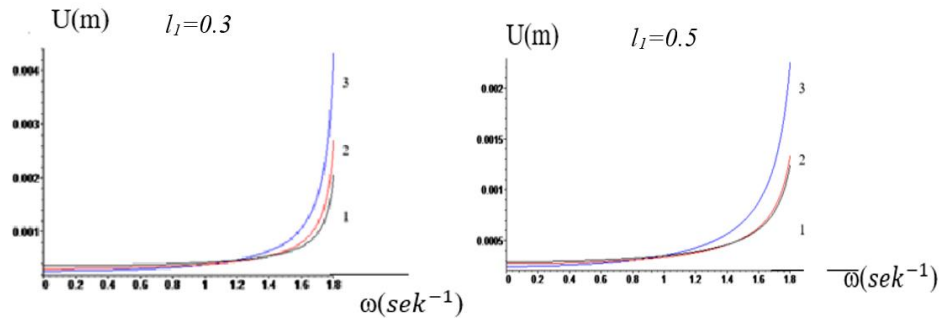


FIGURE 3. Dependence of the deflection amplitude $U(\text{m})$ on the frequency $\omega(\text{sek}^{-1})$ at sections $x=0$ (curve 1), $x=l$ (curve 2), and $x=L$ (curve 3) for two values of the ratio $l_1 = \frac{l}{L}$

2. Let $\sqrt{\frac{k_2}{m}} < \omega < \sqrt{\frac{k_1}{4m}}$ (Case 2).

In this case, the general solution of equations (6) and (7) can be written as:

$$U_1 = C_1 Y_1(\beta_1 \cdot (\xi - l_1)) + C_2 Y_2(\beta_1 \cdot (\xi - l_1)) + C_3 Y_3(\beta_1 \cdot (\xi - l_1)) + C_4 Y_4(\beta_1 \cdot (x - l_1))$$

$$U_2 = C_1 S_1[\beta_2(\xi - l_1)] + C_2 \frac{\beta_1}{\beta_2} S_2[\beta_2(\xi - l_1)] + B_3 \frac{\beta_1^2}{\beta_2^2} S_3[\beta_2(\xi - l_1)] + B_4 \frac{\beta_1^3}{\beta_2^3} S_4[\beta_2(\xi - l_1)]$$

where, $\beta_1 = \sqrt[4]{w_1^2 - w^2}$, $\beta_2 = \sqrt[4]{w^2 - w_2^2}$. $Y_i(\beta z)$, $S_i(\beta z)$ are Krylov functions [5], defined by the following formulas:

$$\begin{aligned} Y_1 &= \cos \beta_1 z \operatorname{ch} \beta_1 z, & Y_2 &= (\sin \beta_1 z \operatorname{ch} \beta_1 z + \cos \beta_1 z \operatorname{sh} \beta_1 z), \\ Y_3 &= \sin \beta_1 z \operatorname{sh} \beta_1 z, & Y_4 &= (\sin \beta_1 z \operatorname{ch} \beta_1 z - \cos \beta_1 z \operatorname{sh} \beta_1 z), \\ S_1 &= 0.5(\operatorname{ch} \beta_2 z + \cos \beta_2 z), & S_2 &= 0.5(\operatorname{sh} \beta_2 z + \sin \beta_2 z), \\ S_3 &= 0.5(\operatorname{ch} \beta_2 z - \cos \beta_2 z), & S_4 &= 0.5(\operatorname{sh} \beta_2 z - \sin \beta_2 z). \end{aligned}$$

The constants C_1, C_2, C_3 and C_4 are determined from conditions (8)-(10).

Figure 4 shows the curves of deflection distribution along the beam length $\xi = x/L$ for various values of the frequency ω .

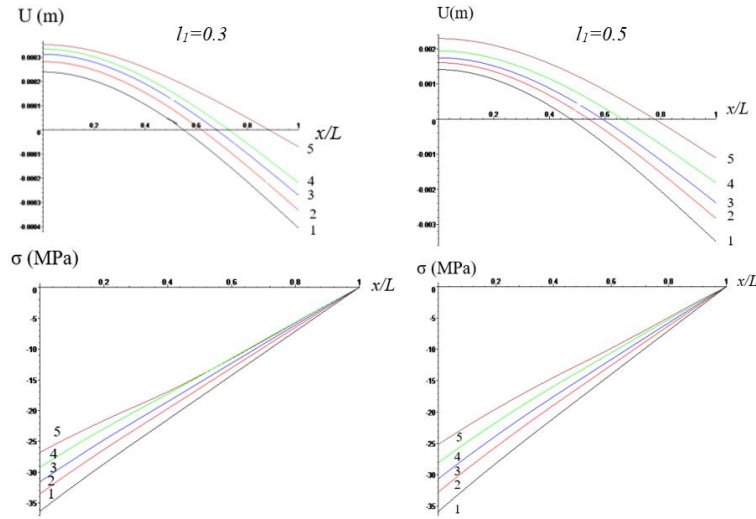


FIGURE 4. Curves of the deflection $U(\text{m})$ and axial stress $\sigma \text{ (MPa)}$ distribution along the beam length $\xi = x/L$ for two values of the ratio $l_1 = \frac{l}{L}$ at different values of the base vibration frequency $\omega \left(\frac{1}{\text{sek}}\right)$: $1-\omega = 2.2$, $2-\omega = 2.3$, $3-\omega = 2.4$; $4-\omega = 2.6$; $5-\omega = 3.2$

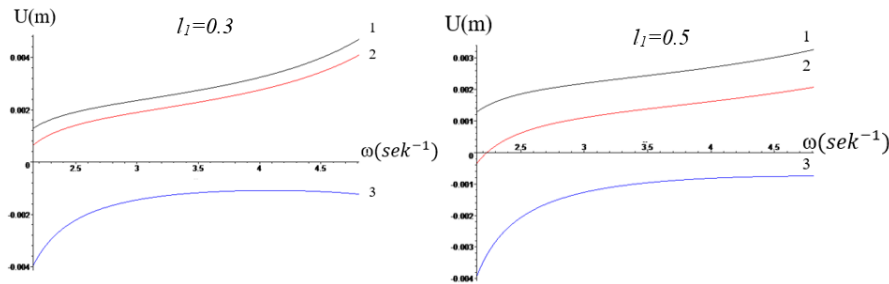


FIGURE 5. Dependence of the deflection amplitude on the frequency $\omega \left(\frac{1}{\text{sek}}\right)$ at sections $x=0$ (curve 1), $x=l$ (curve 2), and $x=L$ (curve 3) for two values of the ratio $l_1 = \frac{l}{L}$.

3. Now consider the case where the external excitation frequency satisfies the inequality $\omega > \sqrt{\frac{k_1}{4m}}$ (Case 3).

In this case, the general solution of equations (6) and (7) can be written as:

$$U_1 = C_1 Y_1(\beta_1 * (\xi - l_1)) + C_2 Y_2(\beta_1 * (\xi - l_1)) + C_3 Y_3(\beta_1 * (\xi - l_1)) + C_4 Y_4(\beta_1 * (\xi - l_1))$$

$$U_2 = C_1 S_1[\beta_2(\xi - l_1)] + C_2 \frac{\beta_1}{\beta_2} S_2[\beta_2(\xi - l_1)] + B_3 \frac{\beta_1^2}{\beta_2^2} S_3[\beta_2(\xi - l_1)] + B_4 \frac{\beta_1^3}{\beta_2^3} S_4[\beta_2(\xi - l_1)]$$

where, $\beta_1 = \sqrt[4]{w^2 - w_1^2}$, $\beta_2 = \sqrt[4]{w^2 - w_2^2}$,

$Y_i(\beta z)$, $S_i(\beta z)$ are Krylov functions [5], defined by the formulas:

$$Y_1 = 0.5 * (ch\beta_1 z + \cos \beta_1 z), \quad Y_2 = 0.5 * (sh\beta_1 z + \sin \beta_1 z),$$

$$Y_3 = 0.5 * (ch\beta_1 z - \cos \beta_1 z), \quad Y_4 = 0.5 * (sh\beta_1 z - \sin \beta_1 z).$$

$$S_1 = 0.5 * (ch\beta_2 z + \cos \beta_2 z), \quad S_2 = 0.5 * (sh\beta_2 z + \sin \beta_2 z),$$

$$S_3 = 0.5 * (ch\beta_2 z - \cos \beta_2 z), \quad S_4 = 0.5 * (sh\beta_2 z - \sin \beta_2 z).$$

The constants C_1, C_2, C_3 and C_4 are determined from conditions (8)-(10).

Figure 6 shows the curves of deflection distribution along the beam length for various values of the frequency ω .

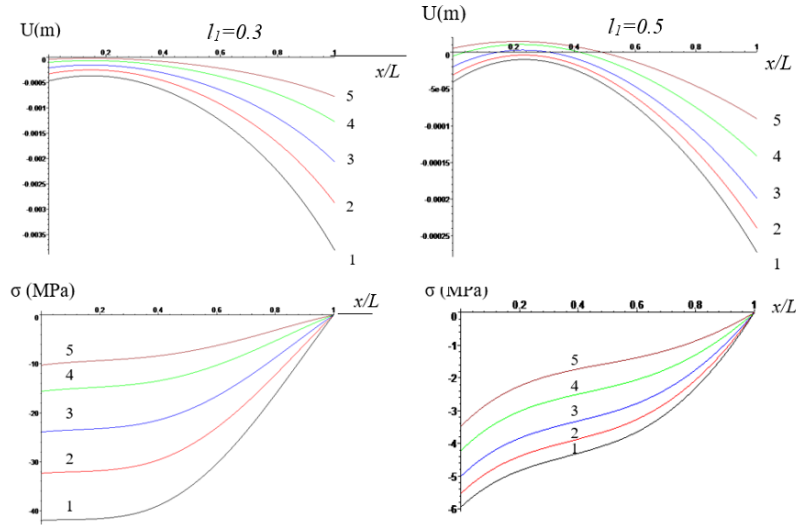


FIGURE 6. Curves of the deflection amplitude $U(m)$ and axial stress σ (MPa) along the beam length $\xi = x/L$ for two values of the ratio $l_1 = \frac{l}{L}$ at different base vibration frequencies ω ($\frac{1}{\text{sek}}$): 1- $\omega = 4$, 2- $\omega = 4.2$, 3- $\omega = 4.5$; 4- $\omega = 4.6$; 1- $\omega = 5$

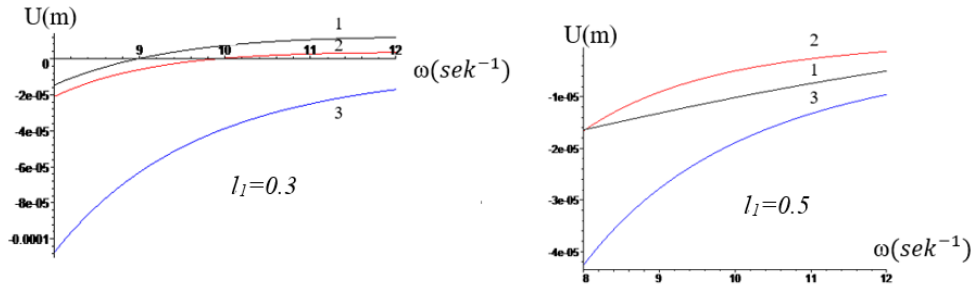


FIGURE 7. Dependence of the deflection amplitude on the frequency $\omega(\text{sek}^{-1})$ at sections $x=0$ (curve 1), $x=l$ (curve 2), and $x=L$ (curve 3) for two values of the ratio $l_1 = \frac{l}{L}$.

CONCLUSION

Analysis of the results shows a significant influence of external excitation frequencies close to resonance on the magnitudes of beam deflections and axial stresses. At low frequencies (Figure 2), near the resonance frequency ($1.72 < \omega < 2$), the beam deflections along its length increase monotonically and reach high values as the frequency approaches resonance. In this case, the tensile stresses attain their maximum values at the lower section of the beam.

For frequencies in the range $\sqrt{\frac{k_2}{m}} < \omega < \sqrt{\frac{k_1}{4m}}$ (Case 2), the pattern of deflections and stresses changes: the deflections of the upper section can become negative, and the entire length of the beam is under compression.

Finally, at high values of the external excitation frequency (Figure 6, Case 3), the beam also remains in compression, with deflections along the entire length being practically negative, and the largest deflections occurring at the section where the mass is attached. Increasing the length of the contact zone l between the two soil conditions leads to a reduction in both deflections and stress values along the beam.

REFERENCES

1. Pile Foundations. Updated Edition of SNiP 2.02.03-85. Official Edition. Moscow, (2011).
2. A.A. Grigoryan, Pile Foundations of Buildings and Structures on Collapsible Soils, Moscow, Stroyizdat, (1984).

3. V.A. Ilyichev, Geotechnical Handbook: Foundations, Substructures, and Underground Structures. Moscow, ASV Publishing, (2014).
4. A.T. Iovchuk, On the Use of Piles in Soils with Weak Layers, Foundations and Mechanics of Soils, **2**, 32–36 (1967).
5. R.A. Mangushev, Modern Pile Technologies: Textbook, 2nd edition, 2010.
6. Guidelines for Designing Pile Foundations of Buildings and Structures on Collapsible Soils. Moscow, Stroyizdat, (1969).
7. R.A. Mangushev, Piles and Pile Foundations: Structures, Design, and Technologies, Moscow, ASV, (2015).
8. Guidelines for Designing Pile Foundations. Moscow, NIIOSP named after N.M. Gersevanov, (1980).
9. A.G. Bulgakov, Formulation and Solution of the Problem of Interaction of Building Structures on Pile Foundations with Seismic Waves, Theory of Engineering Structures, Building Constructions, **2**, 3–13 (2014).



LICENSE TO PUBLISH AGREEMENT FOR CONFERENCE PROCEEDINGS

This License to Publish must be signed and returned to the Proceedings Editor before the manuscript can be published. If you have questions about how to submit the form, please contact the AIP Publishing Conference Proceedings office (confproc@aip.org). For questions regarding the copyright terms and conditions of this License, please contact AIP Publishing's Office of Rights and Permissions, 1305 Wall Whitman Road, Suite 300, Melville, NY 11747-4300 USA; Phone 516-576-2268; Email: rights@aip.org.

Article Title ("Work"):

Assessment of Pile Vibrations in Various Soil Layers

All Author(s):

Dilshod Kholikov, Dilfuza Ismatova

Kamola Khaydarova, Elbek Ismoilov

AMSMT2025

Title of Conference:

Valentin L. Popov

Name(s) of Editor(s):

All Copyright Owner(s), if not Author(s):

(Please list all copyright owner(s) by name. In the case of a Work Made for Hire, the employer(s) or commissioning party(ies) are the copyright owner(s). For large groups of copyright owners, attach a separate list to this form.)

Copyright Ownership and Grant of Rights

For the purposes of this License, the "Work" consists of all content within the article itself and made available as part of the article, including but not limited to the abstract, tables, figures, graphs, images, and multimedia files, as well as any subsequent errata. "Supplementary Material" consists of material that is associated with the article but linked to or accessed separately (available electronically only), including but not limited to data sets and any additional files.

This Agreement is an Exclusive License to Publish not a Transfer of Copyright. Copyright to the Work remains with the Author(s) or, in the case of a Work Made for Hire, with the Author(s)' employer(s). AIP Publishing LLC shall own and have the right to register in its name the copyright to the proceedings issue or any other collective work in which the Work is included. Any rights granted under this License are contingent upon acceptance of the Work for publication by AIP Publishing. If for any reason and at its own discretion AIP Publishing decides not to publish the Work, this License is considered void.

Each Copyright Owner hereby grants to AIP Publishing LLC the following irrevocable rights for the full term of United States and foreign copyrights (including any extensions):

1. The exclusive right and license to publish, reproduce, distribute, transmit, display, store, translate, edit, adapt, and create derivative works from the Work (in whole or in part) throughout the world in all formats and media whether now known or later developed, and the nonexclusive right and license to do the same with the Supplementary Material.
2. The right for AIP Publishing to freely transfer and/or sublicense any or all of the exclusive rights listed in #1 above. Sublicensing includes the right to authorize requests for reuse of the Work by third parties.
3. The right for AIP Publishing to take whatever steps it considers necessary to protect and enforce, at its own expense, the exclusive rights granted herein against third parties.

Author Rights and Permitted Uses

Subject to the rights herein granted to AIP Publishing, each Copyright Owner retains ownership of copyright and all other proprietary rights such as patent rights in the Work.

Each Copyright Owner retains the following nonexclusive rights to use the Work, without obtaining permission from AIP Publishing, in keeping with professional publication ethics and provided clear credit is given to its first publication in an AIP Publishing proceeding. Any reuse must include a full credit line acknowledging AIP Publishing's publication and a link to the Version of Record (VOR) on AIP Publishing's site.

Each Copyright Owner may:

1. Reprint portions of the Work (excerpts, figures, tables) in future works created by the Author, in keeping with professional publication ethics.
2. Post the Accepted Manuscript (AM) to their personal web page or their employer's web page immediately after acceptance by AIP Publishing.
3. Deposit the AM in an institutional or funder-designated repository immediately after acceptance by AIP Publishing.

4. Use the AM for posting within scientific collaboration networks (SCNs). For a detailed description of our policy on posting to SCNs, please see our Web Posting Guidelines (<https://publishing.aip.org/authors/web-posting-guidelines>).
5. Reprint the Version of Record (VOR) in print collections written by the Author, or in the Author's thesis or dissertation. It is understood and agreed that the thesis or dissertation may be made available electronically on the university's site or in its repository and that copies may be offered for sale on demand.
6. Reproduce copies of the VOR for courses taught by the Author or offered at the institution where the Author is employed, provided no fee is charged for access to the Work.
7. Use the VOR for internal training and noncommercial business purposes by the Author's employer.
8. Use the VOR in oral presentations made by the Author, such as at conferences, meetings, seminars, etc., provided those receiving copies are informed that they may not further copy or distribute the Work.
9. Distribute the VOR to colleagues for noncommercial scholarly use, provided those receiving copies are informed that they may not further copy or distribute the Work.
10. Post the VOR to their personal web page or their employer's web page 12 months after publication by AIP Publishing.
11. Deposit the VOR in an institutional or funder-designated repository 12 months after publication by AIP Publishing.
12. Update a prior posting with the VOR on a noncommercial server such as arXiv, 12 months after publication by AIP Publishing.

Author Warranties

Each Author and Copyright Owner represents and warrants to AIP Publishing the following:

1. The Work is the original independent creation of each Author and does not infringe any copyright or violate any other right of any third party.
2. The Work has not been previously published and is not being considered for publication elsewhere in any form, except as a preprint on a noncommercial server such as arXiv, or in a thesis or dissertation.
3. Written permission has been obtained for any material used from other sources and copies of the permission grants have been supplied to AIP Publishing to be included in the manuscript file.
4. All third-party material for which permission has been obtained has been properly credited within the manuscript.
5. In the event that the Author is subject to university open access policies or other institutional restrictions that conflict with any of the rights or provisions of this License, such Author has obtained the necessary waiver from his or her university or institution.

This License must be signed by the Author(s) and, in the case of a Work Made for Hire, also by the Copyright Owners. One Author/Copyright Owner may sign on behalf of all the contributors/owners only if they all have authorized the signing, approved of the License, and agreed to be bound by it. The signing Author and, in the case of a Work Made for Hire, the signing Copyright Owner warrants that he/she/it has full authority to enter into this License and to make the grants this License contains.

1. The Author must please sign here (except if an Author is a U.S. Government employee, then please sign under #3 below):

 Kamola Khaydarova 24.11.2025
Author(s) Signature Print Name Date

2. The Copyright Owner (if different from the Author) must please sign here:

Name of Copyright Owner Authorized Signature and Title Date

3. If an Author is a U.S. Government employee, such Author must please sign below.

The signing Author certifies that the Work was written as part of his/her official duties and is therefore not eligible for copyright protection in the United States.

Name of U.S. Government Institution (e.g., Naval Research Laboratory, NIST)

Author Signature Print Name Date

PLEASE NOTE: NATIONAL LABORATORIES THAT ARE SPONSORED BY U.S. GOVERNMENT AGENCIES BUT ARE INDEPENDENTLY RUN ARE NOT CONSIDERED GOVERNMENT INSTITUTIONS. (For example, Argonne, Brookhaven, Lawrence Livermore, Sandia, and others.) Authors at these types of institutions should sign under #1 or #2 above.

If the Work was authored under a U.S. Government contract, and the U.S. Government wishes to retain for itself and others acting on its behalf, a paid-up, nonexclusive, irrevocable, worldwide license in the Work to reproduce, prepare derivative works from, distribute copies to the public, perform publicly, and display publicly, by or on behalf of the Government, please check the box below and add the relevant Contract numbers.

☐ Contract #(s) _____ [1,16,1]

LICENSE TERMS DEFINED

Accepted Manuscript (AM): The final version of an author's manuscript that has been accepted for publication and incorporates all the editorial changes made to the manuscript after submission and peer review. The AM does not yet reflect any of the publisher's enhancements to the work such as copyediting, pagination, and other standard formatting.

arXiv: An electronic archive and distribution server for research article preprints in the fields of physics, mathematics, computer science, quantitative biology, quantitative finance, and statistics, which is owned and operated by Cornell University, <http://arxiv.org/>.

Commercial and noncommercial scholarly use: *Noncommercial* scholarly uses are those that further the research process for authors and researchers on an individual basis for their own personal purposes. They are author-to-author interactions meant for the exchange of ideas. *Commercial* uses fall outside the author-to-author exchange and include but are not limited to the copying or distribution of an article, either in hard copy form or electronically, for resale or licensing to a third party; posting of the AM or VOR of an article by a site or service where an access fee is charged or which is supported by commercial paid advertising or sponsorship; use by a for-profit entity for any type of promotional purpose. Commercial uses require the permission of AIP Publishing.

Embargo period: The period of time during which free access to the full text of an article is delayed.

Employer's web page: A web page on an employer's site that highlights the accomplishments and research interests of the company's employees, which usually includes their publications. (See also: Personal web page and Scholarly Collaboration Network).

Exclusive License to Publish: An exclusive license to publish is a written agreement in which the copyright owner gives the publisher exclusivity over certain inherent rights associated with the copyright in the work. Those rights include the right to reproduce the work, to distribute copies of the work, to perform and display the work publicly, and to authorize others to do the same. The publisher does not hold the copyright to the work, which continues to reside with the author. The terms of the AIP Publishing License to Publish encourage authors to make full use of their work and help them to comply with requirements imposed by employers, institutions, and funders.

Full Credit Line: AIP Publishing's preferred format for a credit line is as follows (you will need to insert the specific citation information in place of the capital letters): "Reproduced from [FULL CITATION], with the permission of AIP Publishing." A FULL CITATION would appear as: Journal abbreviation, volume number, article ID number or page number (year). For example: Appl. Phys. Lett. 107, 021102 (2015).

Institutional repository: A university or research institution's digital collection of articles that have been authored by its staff and which are usually made publicly accessible. As authors are encouraged and sometimes required to include their published articles in their institution's repository, the majority of publishers allow for deposit of the Accepted Manuscript for this purpose. AIP Publishing also allows for the VOR to be deposited 12 months after publication of the Work.

Journal editorial office: The contact point for authors concerning matters related to the publication of their manuscripts. Contact information for the journal editorial offices may be found on the journal websites under the "About" tab.

Linking to the Version of Record (VOR): To create a link to your article in an AIP Publishing journal or proceedings, you need to know the CrossRef digital object identifier (doi). You can find the doi on the article's abstract page. For instructions on linking, please refer to our Web Posting Guidelines at <https://publishing.aip.org/authors/web-posting-guidelines>.

National Laboratories: National laboratories are sponsored and funded by the U.S. Government but have independent nonprofit affiliations and employ private sector resources. These institutions are classified as Federally Funded Research and Development Centers (FFRDCs). Authors working at FFRDCs are not

considered U.S. Government employees for the purposes of copyright. The Master Government List of FFRDCs may be found at <http://www.nsf.gov/statistics/ffrdclist/>.

Personal web page: A web page that is hosted by the author or the author's institution and is dedicated to the author's personal research interests and publication history. An author's profile page on a social media site or scholarly collaboration network site is *not* considered a personal web page. (See also: Scholarly Collaboration Network; Employer's web page).

Peer X-Press: A web-based manuscript submission system by which authors submit their manuscripts to AIP Publishing for publication, communicate with the editorial offices, and track the status of their submissions. The Peer X-Press system provides a fully electronic means of completing the License to Publish. A hard copy of the Agreement will be supplied by the editorial office if the author is unable to complete the electronic version of the form. (Conference Proceedings authors will continue to submit their manuscripts and forms directly to the Conference Editors.)

Preprint: A version of an author's manuscript intended for publication but that has not been peer reviewed and does not reflect any editorial input or publisher enhancements.

Professional Publication Ethics: AIP Publishing provides information on what it expects from authors in its "Statement of ethics and responsibilities of authors submitting to AIP Publishing journals" (<http://publishing.aip.org/authors/ethics>). AIP Publishing is also a member of the Committee on Publication Ethics (COPE) (<http://publicationethics.org/>), which provides numerous resources and guidelines for authors, editors, and publishers with regard to ethical standards and accepted practices in scientific publishing.

Scholarly Collaboration Network (SCN): Professional networking sites that facilitate collaboration among researchers as well as the sharing of data, results, and publications. SCNs include sites such as Academia.edu, ResearchGate, and Mendeley, among others.

Supplementary Material: Related material that has been judged by peer review as being relevant to the understanding of the article but that may be too lengthy or of too limited interest for inclusion in the article itself. Supplementary Material may include data tables or sets, appendixes, movie or audio clips, or other multimedia files.

U.S. Government employees: Authors working at Government organizations who author works as part of their official duties and who are not able to license rights to the Work, since no copyright exists. Government works are in the public domain within the United States.

Version of Record (VOR): The final published version of the article as it appears in the printed journal/proceedings or on the Scitation website. It incorporates all editorial input, is formatted in the publisher's standard style, and is usually viewed in PDF form.

Waiver: A request made to a university or institution to exempt an article from its open-access policy requirements. For example, a conflict will exist with any policy that requires the author to grant a nonexclusive license to the university or institution that enables it to license the Work to others. In all such cases, the Author must obtain a waiver, which shall be included in the manuscript file.

Work: The "Work" is considered all the material that comprises the article, including but not limited to the abstract, tables, figures, images, multimedia files that are directly embedded within the text, and the text itself. The Work does not include the Supplementary Material (see Supplementary Material above).

Work Made for Hire: Under copyright law, a work prepared by an employee within the scope of employment, or a work that has been specially ordered or commissioned for which the parties have agreed in writing to consider as a Work Made for Hire. The hiring party or employer is considered the author and owner of the copyright, not the person who creates the work.